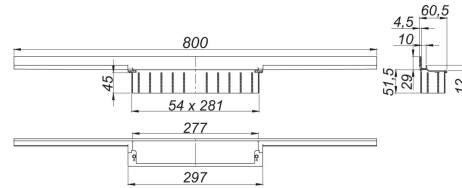
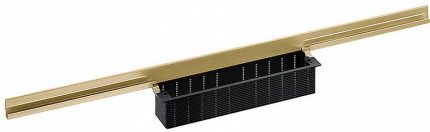


shower channel CeraWall Individual brass matt, 800 mm

Product No. **536945**
 EAN: 4001636536945
 Discount group: 11



for installation with drain body DallFlex, DallFlex Plan, DallFlex vertical and shower underlay DallFlex Wall, DallFlex Wall Plan.
 Concealed channel with integrated fall, for installation at the junction of wall and floor.
 Suitable for floor and wall finish of 12 – 24 mm (including adhesive), length can be adjusted by one millimeter.

specification

- self-adhesive security tape S 3 with cut-resistant stainless steel mesh and sound insulation
- accessories for installation and positioning
- scriber template
- construction and sealing adhesive
- temporary blanking plate

Material

304 stainless steel, PVD coating in brass matt

Ordering CeraWall Individual:

Please order drain body DallFlex or shower underlay DallFlex Wall + shower channel CeraWall Individual + cover plate as three components.

Product No.	Description	Dimensions
537041	cover plate CeraWall Individual brass matt	
537058	Cover plate CeraWall Individual Design brass matt	
537157	Drain body CeraFlex Plan, DN 40	DN 40
537164	Drain body CeraFlex vertical, DN 50	DN 50
537140	Drain body CeraFlex, DN 50	DN 50

20. calendar_month_january 2021

539304	Drain body DallFlex EPS assembled, DN 50	DN 50
539311	Drain body DallFlex Plan EPS assembled, DN 40	DN 40
539014	Drain body DallFlex Plan, DN 40	DN 40
539076	drain body DallFlex vertical, DN 50	DN 50
539007	drain body DallFlex, DN 50	DN 50