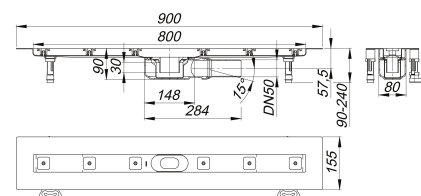
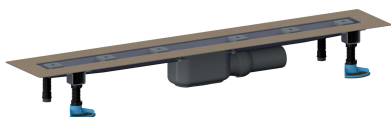


shower channel CeraLine Plan F 800 mm, DN 50

Part number: 523044
 GTIN: 4001636523044
 Rebate group: 8



Description:

shower channel CeraLine Plan F 800 mm, DN 50
 Linear drainage
 with one drain body, outlet DN 50 horizontal, ball-joint adjustable 0 – 15 degrees

specification

- sound absorbing height adjustable levelling legs
- integral sand coated flange for secure bonding of under-tile waterproofing
- removable trap insert, 30 mm water seal (deviating to DIN EN 1253)
- height adjustable screws
- temporary blanking plate
- tiling gauges
- edge trim jigs

material

channel 304 stainless steel, trap polypropylene

Options for CeraLine Plan F:

Any made-to-measure length up to 1200 mm can be supplied. Please enquire!

CeraLine 600 mm – 1100 mm can be used with the Poresta® BFR 75 unit!

The outlet connector can be supplied in ABS to suit British Standard sizes and PE-HD conforming to DIN EN 1519. Please enquire.

Flow rates tested to DIN EN 1253:

| Nominal diameter | Product standard | Min. flow rate according to norm | Water level according to norm |
|------------------|------------------|----------------------------------|-------------------------------|
| DN 50 | DIN EN 1253 | 0.80 l/s | 20.00 mm |

Spare parts:

523983 adjustable pedestals