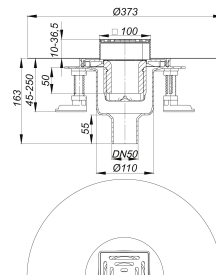
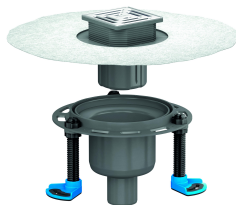


floor drain DallDrain Select vertical, DN 50/DN 100, 100 x 100 mm

Part number: 517135
 GTIN: 4001636517135
 Rebate group: 6



Description:

floor drain DallDrain Select vertical, DN 50/DN 100, 100 x 100 mm
 conforming to DIN EN 1253
 Floor drain including grating DallDrain Select with stainless steel grate in stainless steel frame. Outlet DN 50/DN 100 vertical.

Specification

- Stainless steel grate and frame
- Integrated screed anchoring
- Flexible, click-in sealing sleeve for secure connection to bonded and sheet waterproofing conforming to DIN 18534
- Fully removable, two-piece trap insert and rodding eye, 50 mm water seal (conforming to DIN EN 1253)
- Temporary blanking plate
- Three sound-insulated mounting feet for fixing and height adjustment 47 – 250 mm
- Spigot can be shortened for floorings 10 – 36 mm (including adhesive)

Material

Polypropylene drain body and outlet, highly impact-resistant; 1.4301 stainless steel grate, load class K 3 (300 kg); spigot in ABS, frame in 1.4301 stainless steel
 Pre-assembled set consisting of parts no. 517265 + 517234 + 517340.

Grating with positioning aid laterally adjustable +/- 2.5 mm.
 Fire and sound-insulating collar - installation kit 2 (Part No. 515025) or

fire protection kit 12 (Part No. 515438) applicable.

Flow rates tested to DIN EN 1253:

Nominal diameter	Product standard	Min. flow rate according to norm	Water level according to norm	Flow rate at water level 10 mm	Flow rate at water level 20 mm
DN 50	DIN EN 1253	0.80 l/s	20.00 mm	0.72 l/s	1.30 l/s

Spare parts:

517340 mounting feet DallDrain